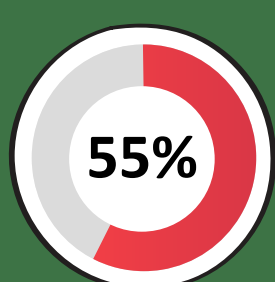




## INCOME LEVEL IS THE DEFINING FACTOR FOR TOOTH LOSS, RESPONDENTS THINK



of respondents believe that high social status means fewer missing teeth

### TOP 5 SOCIAL FACTORS

affecting the number of missing teeth

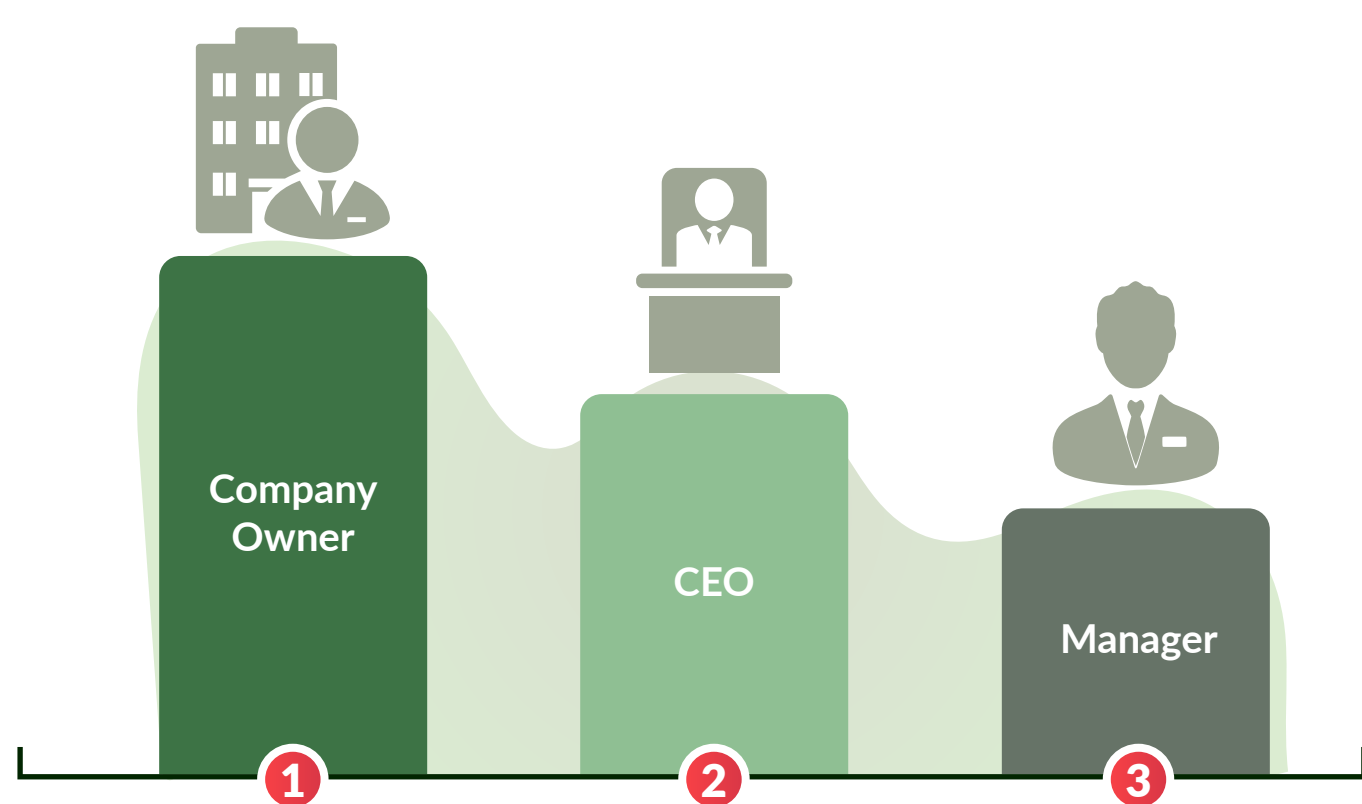
(based on respondents' opinions)



### TOP 3 JOB POSITIONS

with the fewest missing teeth in old age

(based on respondents' opinions)

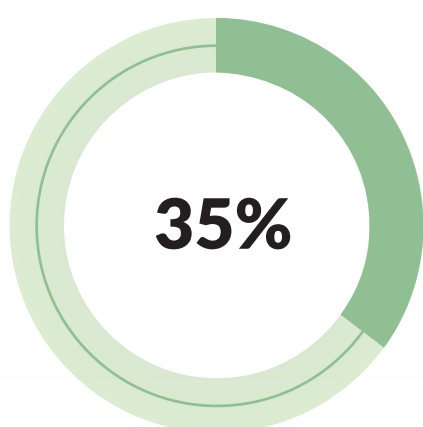


### HIGH SOCIAL STATUS

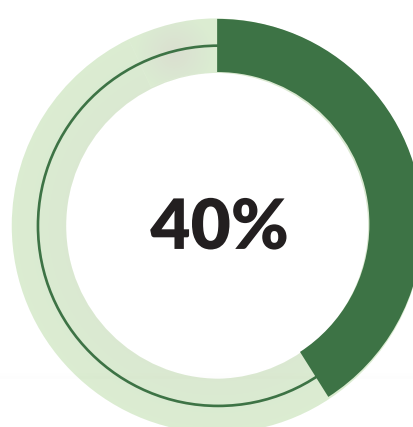
means fewer missing teeth

(based on respondents' real situation)

Percentage of people with **NO** missing teeth among those with a:



(very) low social status



(very) high social status

Based on results from the survey "Tooth Loss & Social Status" completed by 2582 respondents in the period 17/12/2020 - 03/02/2021

DENTAVOX  
dentavox.dentacoin.com

